

medbar®

Microscope Drape



CE 2292

STERILE EO



Intended Use

Nowadays lots of surgery is made by surgical microscopes. During these procedures the risk of contamination from microscope to patient with open wound and to the media is high. Microscope Cover is used for isolating nonsterile surgery microscopes which is taken into the sterile area during the surgical procedures and kept in.

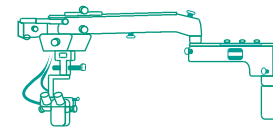
Microscope cover's centre is placed on the microscope's objective and its special ends are placed on the binocular. The cover is fixed to the microscope via stickers and belts on the cover.

Components of product

Microscope Cover consists of a microscope cover film, a lens, a lens centre, 6 double-sided tape (small), a small blue arrow sticker, a small blue right hand sticker, a small blue left hand sticker, 3 tear here sticker, 3 green belt, a double-sided tape (large). In some models (204 01, 204 03 and 204 05) there are inner and outer ring parts around the lens centre. Microscope Cover (204 04) is only consist of cover.

Manufacturing Methods

Main manufacturing processes for Microscope Drape of nylon production, injection, assemble, cutting-stickking, folding, packaging, parcelling and EO sterilization.

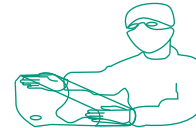


Instructions

1- Prepare Microscope by clamping all cables securely. Adjust tension of knobs.



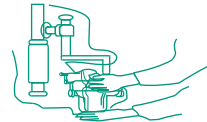
2- Unfold drape, lens cover facing down and away from you, label up.



3- With hands placed inside center fold, form pouch opening.



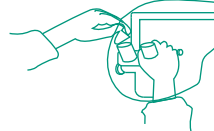
4- Feed drape over furthest protruding microscope components, continue unfolding drape over balance of microscope equipment.



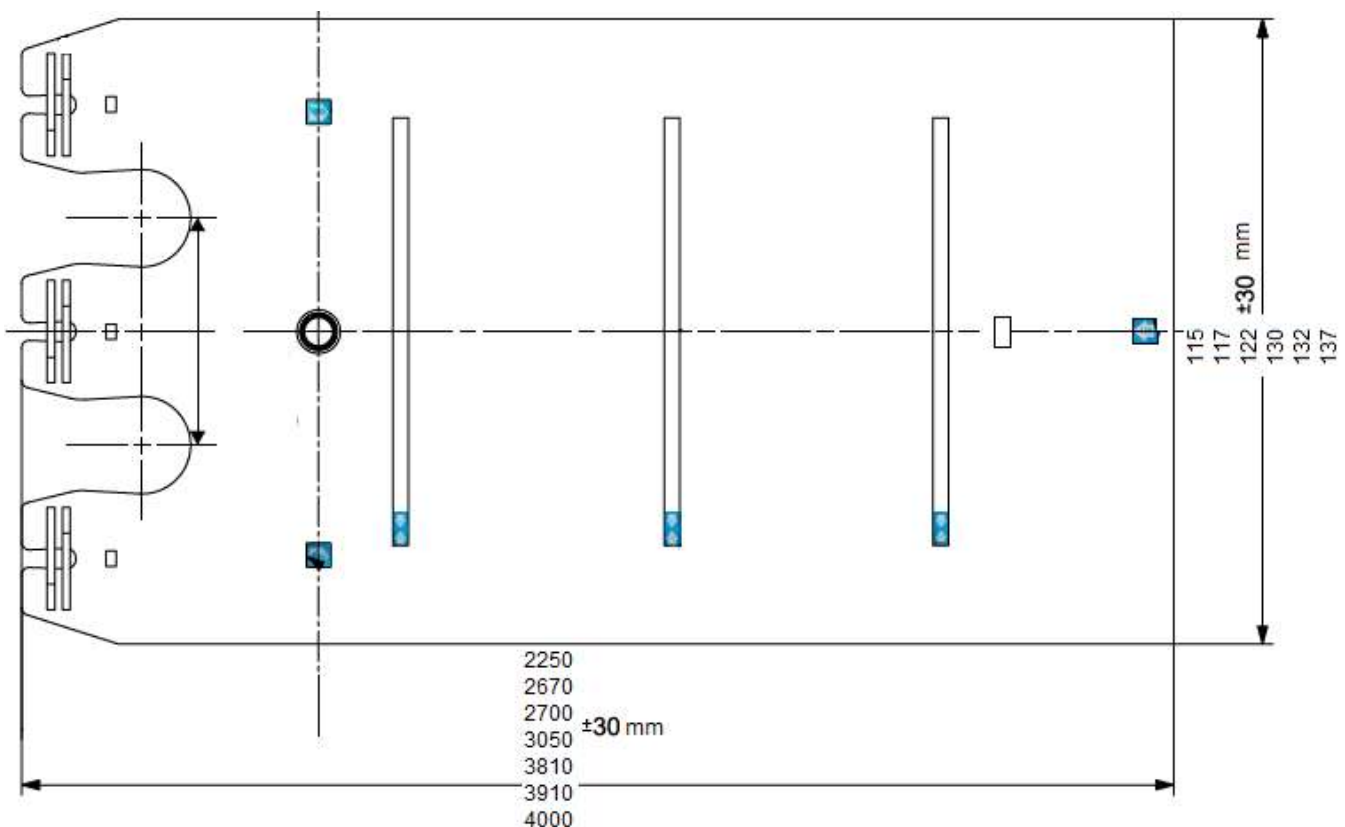
5- Attach lens / light covers, applying upward pressure with palm of hand.



6- Extend balance of drape over microscope arm, gather up extra width with straps.



7 - Tighten excess material around eyepieces. Just before procedure remove top.



Quality and Legistion

- CE marked according to 93/42/EEC Medical Device Directive and classified as Class I steril medical device.
- Manufactured under ISO 13485 Quality Management System Standard.
- Notified Body: UDEM Ltd. AŞ. (2292)
- EC Certification No: M.2016.106.7000
- GMDN Code: 12535.

Biocompability

- Biological evaluation of Microscope Drape done according to ISO 10993-1.
- The products do not incorporate a substance of a human blood derivative, animal orginated tissues,phthalates, medicinal product, latex, radioactive materials and electromagnetic waves.
- Latexfree.

Sterilization

- Microscope Drape is sterilized with Ethylene oxide. Validated for ISO 11135 standard.



REF NO	PRODUCT NAME	STERILIZATION
291 16	Microscope Drape 65 mm 115x225 cm Straight Lens	ETO
204 30	Microscope Drape 65 mm 117x225 cm Straight Lens	
204 38	Microscope Drape 65mm 117x270 cm Straight Lens	
204 07	Microscope Drape 65mm 122x225 cm Straight Lens	
204 42	Microscope Drape 65mm 122x270 cm Straight Lens	
204 39	Microscope Drape 65mm 122x400 cm Straight Lens	
204 33	Microscope Drape 65 mm 130x225 cm Straight Lens	
204 69	Microscope Drape 65mm 132x250 cm Straight Lens	
291 17	Microscope Drape 65 mm 115x225 cm Slopped Lens	
291 14	Microscope Drape 65 mm 115x300 cm Slopped Lens	
291 18	Microscope Drape 65 mm 117x163 cm Slopped Lens	
291 19	Microscope Drape 65 mm 117x203 cm Slopped Lens	
291 20	Microscope Drape 65 mm 117x225 cm Slopped Lens	
291 21	Microscope Drape 65 mm 117x267 cm Slopped Lens	
204 46	Microscope Drape 65 mm 117x305 cm Slopped Lens	
204 02	Microscope Drape 65 mm 122x225cm Slopped Lens	
204 08	Microscope Drape 65 mm 122x270cm Slopped Lens	
204 09	Microscope Drape 65 mm 122x300cm Slopped Lens	
204 41	Microscope Drape 65mm 132x400 cm Slopped Lens	
291 22	Microscope Drape 65 mm 130x225 cm Slopped Lens	
204 47	Microscope Drape 65 mm 132x267 cm Slopped Lens	
204 48	Microscope Drape 65 mm 132x305 cm Slopped Lens	
204 45	Microscope Drape 65 mm 132x381cm Slopped Lens	
204 49	Microscope Drape 65 mm 132x391 cm Slopped Lens	
204 50	Microscope Drape 65 mm 137x267 cm Slopped Lens	
204 51	Microscope Drape 65 mm 137x305 cm Slopped Lens	
204 43	Microscope Drape 65 mm 137x381cm Slopped Lens	
204 52	Microscope Drape 65 mm 137x391cm Slopped Lens	
204 53	Microscope Drape 65 mm 137x400 cm Slopped Lens	
204 15	Microscope Drape 65 mm 122x400cm Slopped Lens	